

## Humboldt's Black-headed Uacari

*Cacajao melanocephalus* **LC**

PT **Uacari-preto**, **Macaco-bicó**, ES **Colimocho**,  
**Mono chucuto**

HB 35–56 cm

T 14–16 cm

W 1.9–2.8 kg

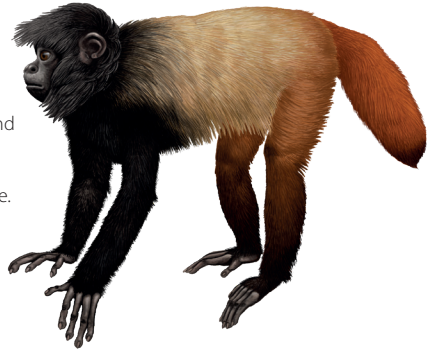


BR, CO, VE; NC & W Amazonia.

**H** Seasonally flooded, black-water forest, *terra firme* and white-sand forest. Between

the rios Negro and Japurá/Caquetá, W of the R. Cassiquiare, W to between the Guayabero/Guaviare.

**ID** Dorsum golden-yellow; lower back redder; reddish-brown thighs, tail darker; nape, mantle, head, beard, arms, hands, and feet blackish; mantle to shoulders with some golden hairs.



## Neblina Black-headed Uacari

*Cacajao hosomi* **VU**

PT **Uacari-preto**, ES **Mono chucuto**

HB 30–50 cm

T 13–21 cm

W 2.4–4.5 kg

(male larger than female)



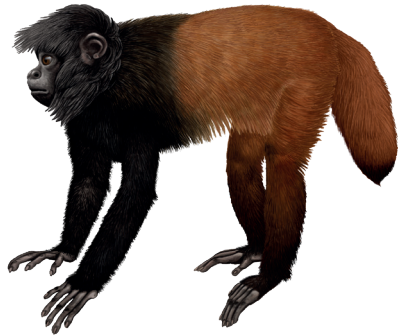
BR, VE; NC Amazonia.

**H** Lowland permanently or seasonally flooded forest near black-water streams, palm swamp, *terra firme* forest and white-sand, caatinga

forest. Between the upper rios Orinoco and Negro.

**ID** Largest of the black uacaris. Dorsum, tail, thighs bright reddish-brown; nape, mantle, shoulders, head, beard, arms, legs, hands, feet, and tail-tip blackish.

△ 100–1500 m



## Ayres's Black-headed Uacari

*Cacajao ayresi* **LC**

PT **Uacari-preto de-Araca**

HB 36.3–39.5 cm

T 15.5–18 cm

W 2.25–24.5 kg



BR **E**; NC Amazonia.

**H** *Terra firme* and permanently or seasonally flooded forest near black-water streams, palm swamp. In the R.

Curuduri basin, N of the R. Negro.

**ID** Small uacari. Dorsum, thighs, tail blackish, with reddish hair showing through; dorsal surface of tail reddish, tip black; dark mantle of longer hairs over shoulders and upper back; underparts, hands, arms, legs (not thighs), and feet black.

